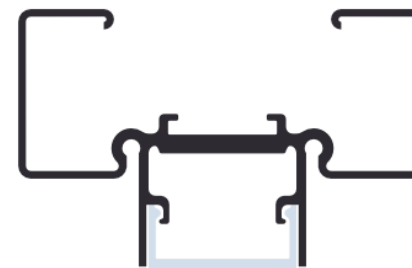
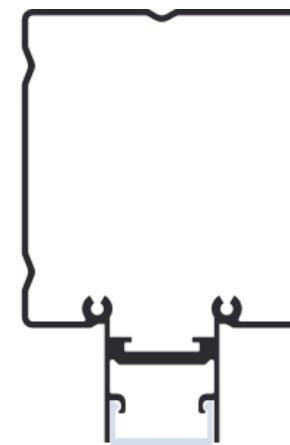
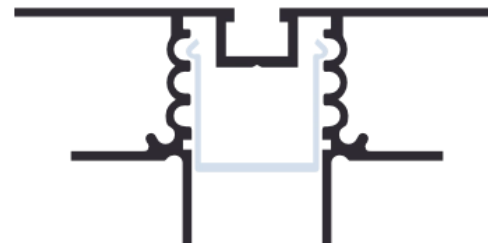
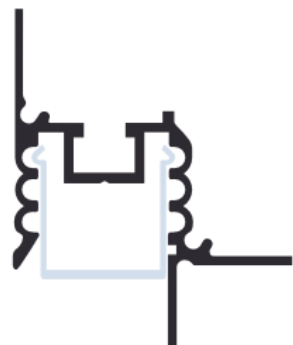


The image features a dark background with a thin gold border. At the top, the word "ARCADIA" is written in a stylized, outlined font, with a second "ARCADIA" below it that is a mirror image of the first. The bottom of the image is decorated with several overlapping, outlined geometric shapes, including rectangles and triangles, in a light gray color.

ARCADIA
ARCADIA

- PROFILI
- STRIP LED
- ALIMENTATORI
- DIMMER

PROFILI ALLUMINIO





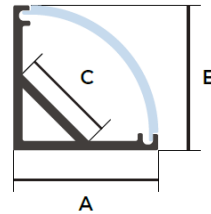
Angolare tondo 16x16mm

Specifiche tecniche / Specs

Materiale / Material	Alluminio 6060 / Aluminum 6060
Copertura / Diffuser	Polycarbonato Resistente UV / PC UV Resistant
Grado IP / IP Grade	IP52
Apertura luce / Beam Angle	160°
Lunghezze disponibili / Available Lengths	1m, 2m, 2.5m, 3m, fino a 6m / Up to 6m
Dimensioni / Dimensions	16 x 16 mm

MADE IN ITALY

Sezione / Section



Dimensioni / Dimensions

- A:** 16.0 mm
- B:** 16.0 mm
- C:** 10.0 mm

Finiture / Finishings

Finitura

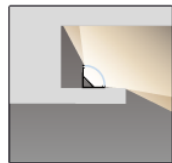
Finishing

- Anodizzato Argento / Silver Anodized
- Verniciato Bianco / White Painted
- Anodizzato Nero / Black Anodized
- Anodizzato Oro / Gold Anodized

Tipi di installazione / Placements



Luce diretta
Direct light



Luce indiretta
Indirect light

Accessori / Accessories



Clip di fissaggio
Fixing clip

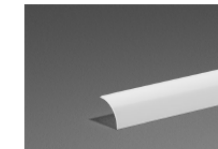


Testata chiusa
Closed end cap

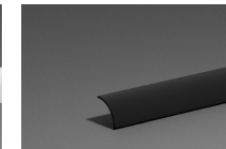


Testata forata
Open end cap

Coperture / Diffusers



Copertura opale
Opal diffuser



Copertura Magic Black
Magic Black diffuser



Angolare quadro 16x16mm

Tipi di installazione / Placements



Luce diretta
Direct light



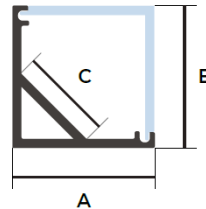
Luce indiretta
Indirect light

Specifiche tecniche / Specs

Materiale / Material	Alluminio 6060 / Aluminum 6060
Copertura / Diffuser	Polycarbonato Resistente UV / PC UV Resistant
Grado IP / IP Grade	IP52
Apertura luce / Beam Angle	160°
Lunghezze disponibili / Available Lengths	1m, 2m, 2.5m, 3m, fino a 6m / Up to 6m
Dimensioni / Dimensions	16 x 16 mm

MADE IN ITALY

Sezione / Section



Dimensioni / Dimensions

A: 16.0 mm
B: 16.0 mm
C: 12.2 mm

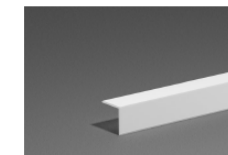
Finiture / Finishings

Finitura

Finishing

	Anodizzato Argento / Silver Anodized
	Verniciato Bianco / White Painted
	Anodizzato Nero / Black Anodized
	Anodizzato Oro / Gold Anodized

Coperture / Diffusers

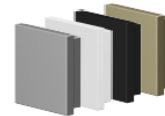


Copertura opale
Opal diffuser

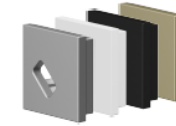
Accessori / Accessories



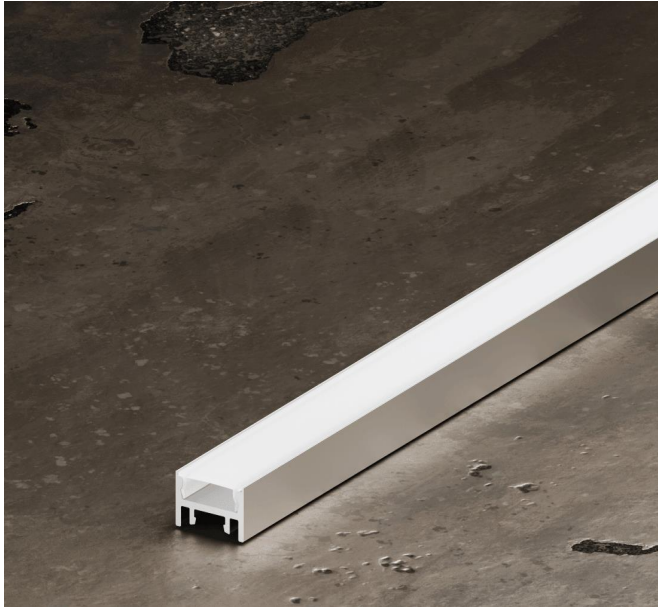
Clip di fissaggio
Fixing clip



Testata chiusa
Closed end cap



Testata forata
Open end cap



Sottopensile

Tipi di installazione / Placements

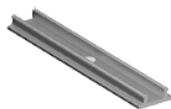


In superficie
Surface-mounted

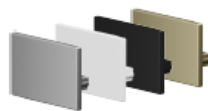


Incasso legno
Recessed

Accessori / Accessories



Clip di fissaggio
Fixing clip

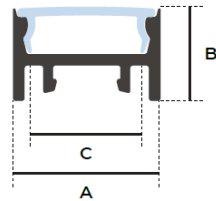


Testata chiusa
Closed end cap



Testata forata
Open end cap

Sezione / Section



Dimensioni / Dimensions

A: 15.5 mm
B: 9.6 mm
C: 12.2 mm

Specifiche tecniche / Specs

Materiale / Material	Alluminio 6060 / Aluminum 6060
Copertura / Diffuser	Policarbonato Resistente UV / PC UV Resistant
Grado IP / IP Grade	IP52
Apertura luce / Beam Angle	160°
Lunghezze disponibili / Available Lengths	1m, 2m, 2.5m, 3m, fino a 6m / Up to 6m
Dimensioni / Dimensions	15.5 x 9.6 mm

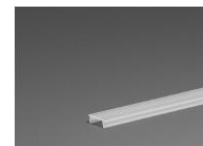
MADE IN ITALY

Finiture / Finishings

Finitura Finishing

- Anodizzato Argento / Silver Anodized
- Verniciato Bianco / White Painted
- Anodizzato Nero / Black Anodized
- Anodizzato Oro / Gold Anodized

Coperture / Diffusers



Copertura opale
Opal diffuser



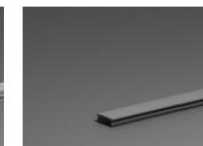
Copertura milk
Milk diffuser



Copertura trasparen.
Transp. diffuser



Copertura 50° trasparen.
50° Transp. diffuser



Copertura Magic Black
Magic Black diffuser

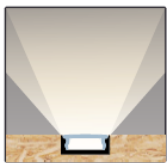


Lineare

Tipi di installazione / Placements



In superficie
Surface-mounted

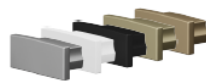


Incasso legno
Recessed

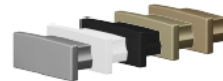
Accessori / Accessories



Clip di fissaggio
Fixing clip

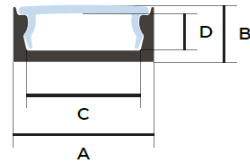


Testata chiusa
Closed end cap



Testata forata
Open end cap

Sezione / Section



Dimensioni / Dimensions

- A:** 15.5 mm
- B:** 6.0 mm
- C:** 12.2 mm
- D:** 4.0 mm

Specifiche tecniche / Specs

Materiale / Material	Alluminio 6060 / Aluminum 6060
Copertura / Diffuser	Policarbonato Resistente UV / PC UV Resistant
Grado IP / IP Grade	IP52
Apertura luce / Beam Angle	160°
Lunghezze disponibili / Available Lengths	1m, 2m, 2.5m, 3m, fino a 6m / Up to 6m
Dimensioni / Dimensions	15.5 x 6 mm

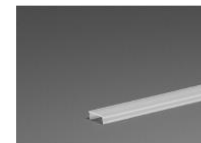
MADE IN ITALY

Finiture / Finishings

Finitura Finishing

- Anodizzato Argento / Silver Anodized
- Verniciato Bianco / White Painted
- Anodizzato Nero / Black Anodized
- Anodizzato Oro / Gold Anodized
- Anodizzato Bronzo / Bronze Anodized

Coperture / Diffusers



Copertura opale
Opal diffuser



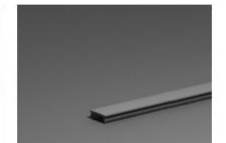
Copertura milk
Milk diffuser



Copertura trasparen.
Transp. diffuser



Copertura 50° trasparen.
50° Transp. diffuser

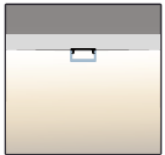


Copertura Magic Black
Magic Black diffuser

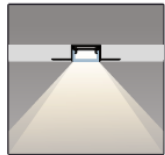


Pieghevole 180°

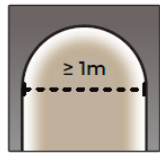
Tipi di installazione / Placements



In superficie
Surface-mounted



Cassaforma
Trimless track for
plastering



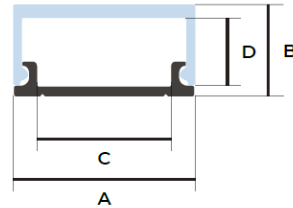
Diametro minimo flessione
Minimum bending diameter

Specifiche tecniche / Specs

Materiale / Material	Alluminio 6060 / Aluminum 6060
Copertura / Diffuser	Policarbonato Resistente UV / PC UV Resistant
Grado IP / IP Grade	IP52
Apertura luce / Beam Angle	180°
Lunghezze disponibili / Available Lengths	1m, 2m, 2.5m, 3m, fino a 6m / Up to 6m
Dimensioni / Dimensions	22.6 x 11.6 mm

MADE IN ITALY

Sezione / Section



Dimensioni / Dimensions

A: 22.6 mm
B: 11.6 mm
C: 16.0 mm
D: 8.5 mm

Finiture / Finishings

Finitura
Finishing

Anodizzato Argento / Silver Anodized

Verniciato Bianco / White Painted

Accessori / Accessories

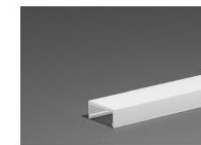


Testata chiusa
Closed end cap

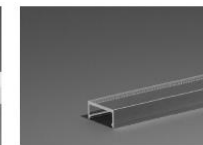


Testata forata
Open end cap

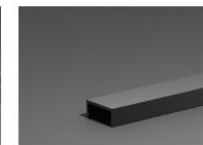
Coperture / Diffusers



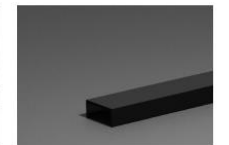
Copertura opale
Opal diffuser



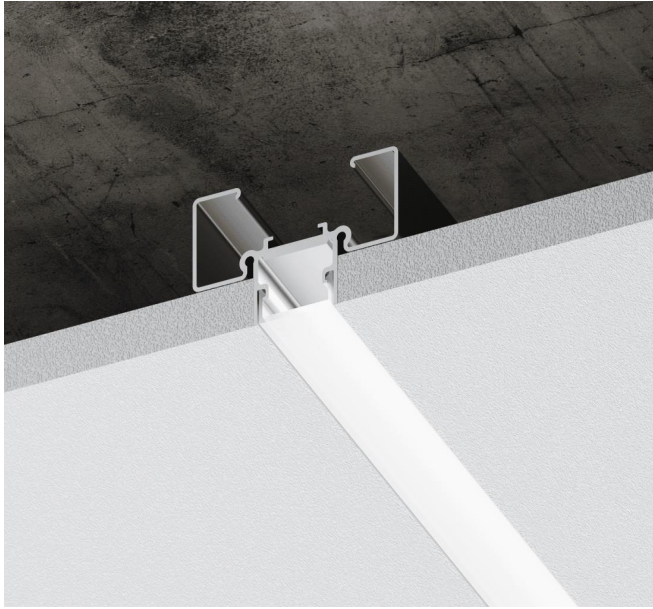
Copertura microprismata
Microprismatic diffuser



Copertura Magic Black
Magic Black diffuser

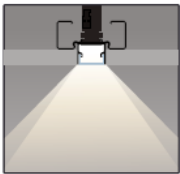


Copertura Black
Painted Black diffuser



Lama di luce + montante

Tipi di installazione / Placements



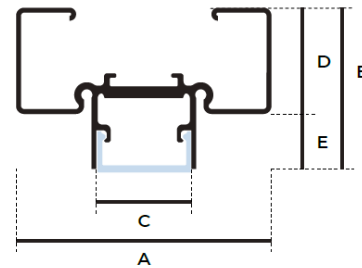
Montante Soffitto
Plaster-in

Specifiche tecniche / Specs

Materiale / Material	Alluminio 6060 / Aluminum 6060
Copertura / Diffuser	Policarbonato Resistente UV / PC UV Resistant
Grado IP / IP Grade	IP52
Apertura luce / Beam Angle	160°
Lunghezze disponibili / Available Lengths	3m
Dimensioni / Dimensions	65 x 41 mm

MADE IN ITALY

Sezione / Section



Dimensioni / Dimensions

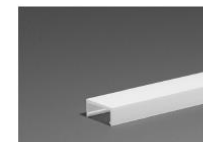
- A: 65.0 mm
- B: 41.0 mm
- C: 26.6 mm
- D: 27.0 mm
- E: 14.0 mm

Finiture / Finishings

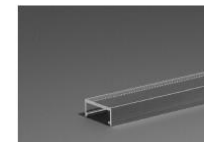
Finitura
Finishing

Anodizzato Argento / Silver Anodized

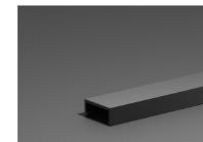
Coperture / Diffusers



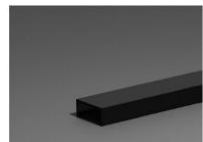
Copertura opale
Opal diffuser



Copertura micropismata
Microprismatic diffuser



Copertura Magic Black
Magic Black diffuser

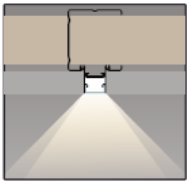


Copertura Black
Painted Black diffuser



Lama di luce + montante parete

Tipi di installazione / Placements



Montante parete

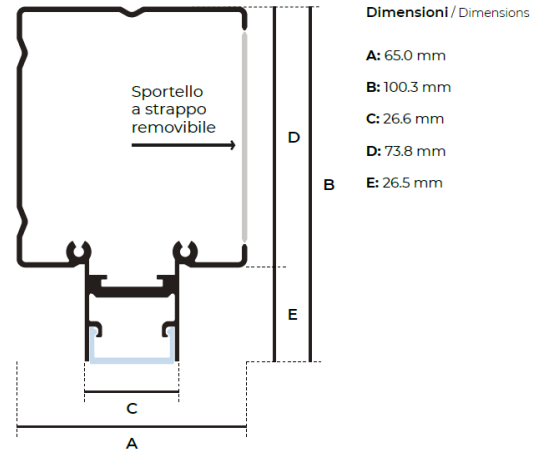
Plaster-in

Specifiche tecniche / Specs

Materiale / Material	Alluminio 6060 / Aluminum 6060
Copertura / Diffuser	Policarbonato Resistente UV / PC UV Resistant
Grado IP / IP Grade	IP52
Apertura luce / Beam Angle	160°
Lunghezze disponibili / Available Lengths	3m
Dimensioni / Dimensions	65 x 100 mm

MADE IN ITALY

Sezione / Section



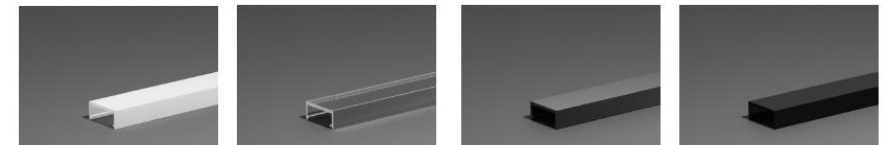
Finiture / Finishings

Finitura

Finishing

Anodizzato Argento / Silver Anodized

Coperture / Diffusers

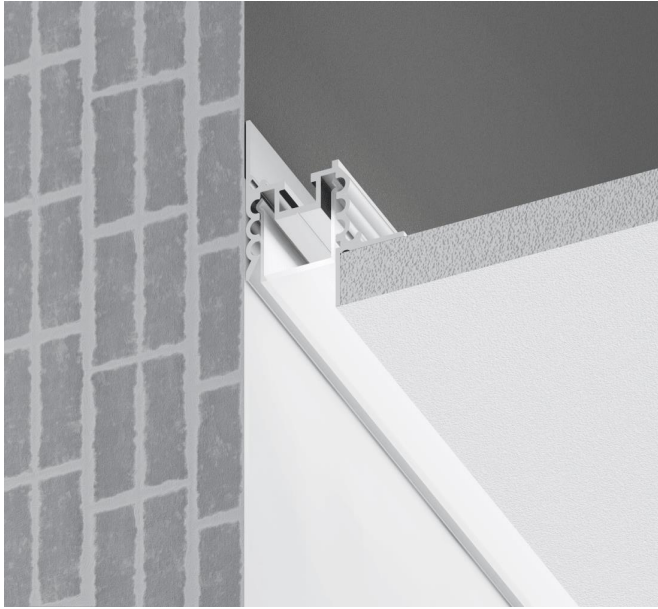


Copertura opale
Opal diffuser

Copertura microprismata
Microprismatic diffuser

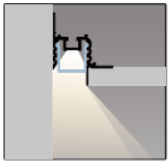
Copertura Magic Black
Magic Black diffuser

Copertura Black
Painted Black diffuser

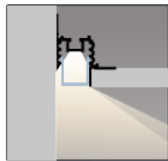


Gola di luce

Tipi di installazione / Placements



Incasso / Retrocesso
Plaster-in / Recessed



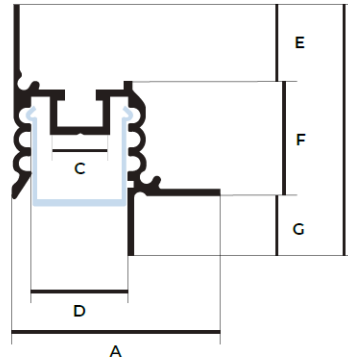
Incasso / A filo
Plaster-in / Flat

Specifiche tecniche / Specs

Materiale / Material	Alluminio 6060 / Aluminum 6060
Copertura / Diffuser	Policarbonato Resistente UV / PC UV Resistant
Grado IP / IP Grade	IP52
Apertura luce / Beam Angle	160°
Lunghezze disponibili / Available Lengths	1m, 2m, 2.5m, 3m, fino a 6m / Up to 6m
Dimensioni / Dimensions	49.6 x 60 mm

MADE IN ITALY

Sezione / Section



Dimensioni / Dimensions

- A:** 49.6 mm
- B:** 60.0 mm
- C:** 15.0 mm
- D:** 23.6 mm
- E:** 18.0 mm
- F:** 27.0 mm
- G:** 15.0 mm

Finiture / Finishings

Finitura Finishing

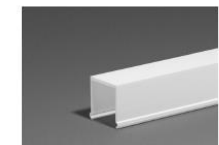
- Anodizzato Argento / Silver Anodized
- Verniciato Bianco / White Painted
- Anodizzato Nero / Black Anodized

Accessori / Accessories

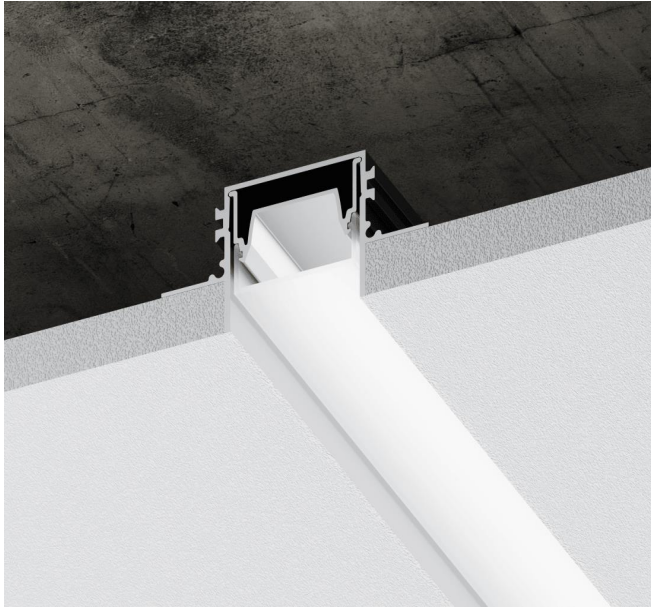


Testata forata
Open end cap

Coperture / Diffusers

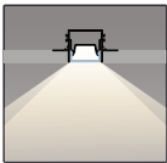


Copertura opale
Opal diffuser

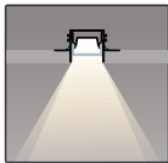


Incasso modulo

Tipi di installazione / Placements



Incasso
Plaster-in



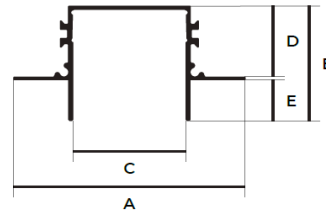
Incasso / Retrocesso
Plaster-in / Recessed

Specifiche tecniche / Specs

Materiale / Material	Alluminio 6060 / Aluminum 6060
Copertura / Diffuser	Policarbonato Resistente UV / PC UV Resistant
Grado IP / IP Grade	IP52
Apertura luce / Beam Angle	160°
Lunghezze disponibili / Available Lengths	1m, 2m, 2.5m, 3m, fino a 6m / Up to 6m
Dimensioni / Dimensions	84.6 x 42 mm

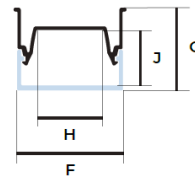
MADE IN ITALY

Sezione / Section



Dimensioni / Dimensions

A: 84.6 mm
B: 42.0 mm
C: 41.0 mm
D: 27.0 mm
E: 15.0 mm



F: 38.6 mm
G: 30.1 mm
H: 24.0 mm
J: 20.2 mm

Accessori / Accessories



Testata forata
Open end cap

Finiture / Finishings

Finitura Finishing

- Anodizzato Argento / Silver Anodized
- Verniciato Bianco / White Painted
- Anodizzato Nero / Black Anodized

Coperture / Diffusers



Copertura opale
Opal diffuser



Copertura microprismata
Microprismatic diffuser



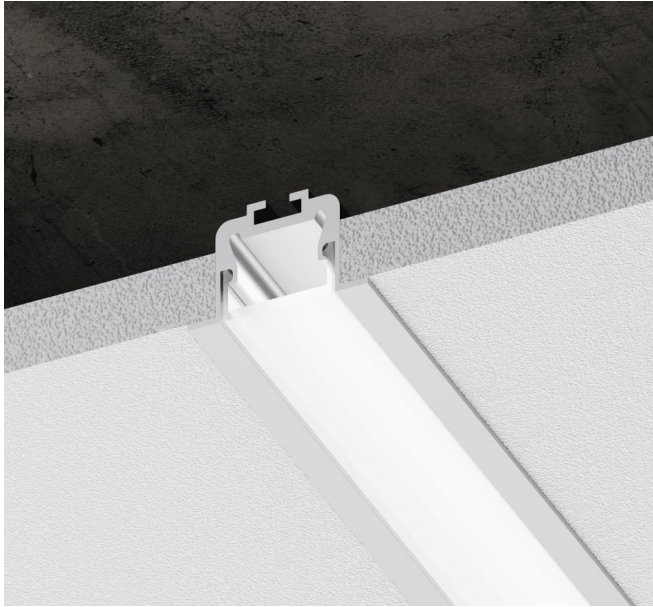
Copertura Magic Black
Magic Black diffuser



Copertura black
Black cover



Copertura black
Black cover



Incasso con bordo

Tipi di installazione / Placements



Incasso
Plaster-in

Accessori / Accessories



Clip a molla
Fixing clip



Testata chiusa
Closed end cap



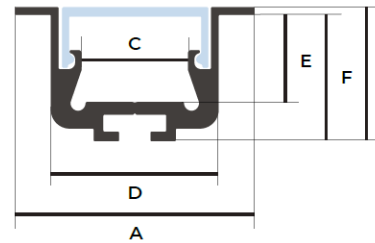
Testata forata
Open end cap

Specifiche tecniche / Specs

Materiale / Material	Alluminio 6060 / Aluminum 6060
Copertura / Diffuser	Policarbonato Resistente UV / PC UV Resistant
Grado IP / IP Grade	IP52
Apertura luce / Beam Angle	160°
Lunghezze disponibili / Available Lengths	1m, 2m, 2.5m, 3m, fino a 6m / Up to 6m
Dimensioni / Dimensions	38 x 22 mm

MADE IN ITALY

Sezione / Section



Dimensioni / Dimensions

- A: 38.0 mm
- B: 22.0 mm
- C: 18.0 mm
- D: 26.6 mm
- E: 15.8 mm
- F: 20.0 mm

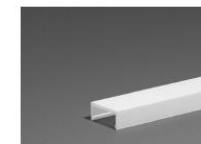
Finiture / Finishings

Finitura

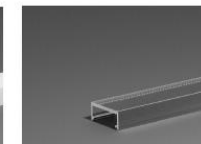
Finishing

- Anodizzato Argento / Silver Anodized
- Verniciato Bianco / White Painted
- Anodizzato Nero / Black Anodized

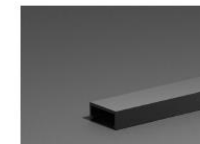
Coperture / Diffusers



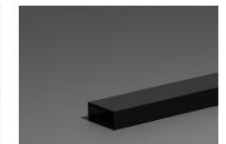
Copertura opale
Opal diffuser



Copertura microprismata
Microprismatic diffuser



Copertura Magic Black
Magic Black diffuser



Copertura Black
Painted Black diffuser



Lineare cassaforma

Tipi di installazione / Placements



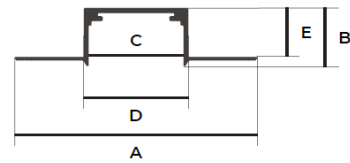
Incasso
Plaster-in

Specifiche tecniche / Specs

Materiale / Material	Alluminio 6060 / Aluminum 6060
Copertura / Diffuser	Policarbonato Resistente UV / PC UV Resistant
Grado IP / IP Grade	IP52
Apertura luce / Beam Angle	160°
Lunghezze disponibili / Available Lengths	1m, 2m, 2.5m, 3m, fino a 6m / Up to 6m
Dimensioni / Dimensions	62.9 x 15.1 mm

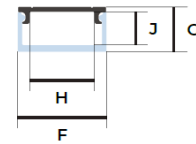
MADE IN ITALY

Sezione / Section



Dimensioni / Dimensions

A: 62.9 mm
B: 15.1 mm
C: 24.6 mm
D: 27.0 mm
E: 12.6 mm



F: 22.6 mm
G: 11.5 mm
H: 16.0 mm
J: 8.5 mm

Finiture / Finishings

Finitura
Finishing

Alluminio / Aluminum

Accessori / Accessories



Tappo forato ABS
ABS Open end cap

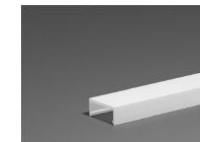


Sistema magnetico
Magnetic system

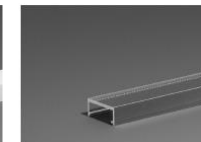


Biadesivo VHB 3M pretagliato
3M VHB pre-cut biadhesive

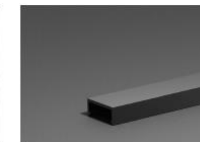
Coperture / Diffusers



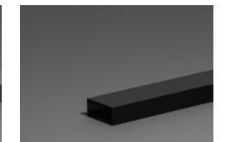
Copertura opale
Opal diffuser



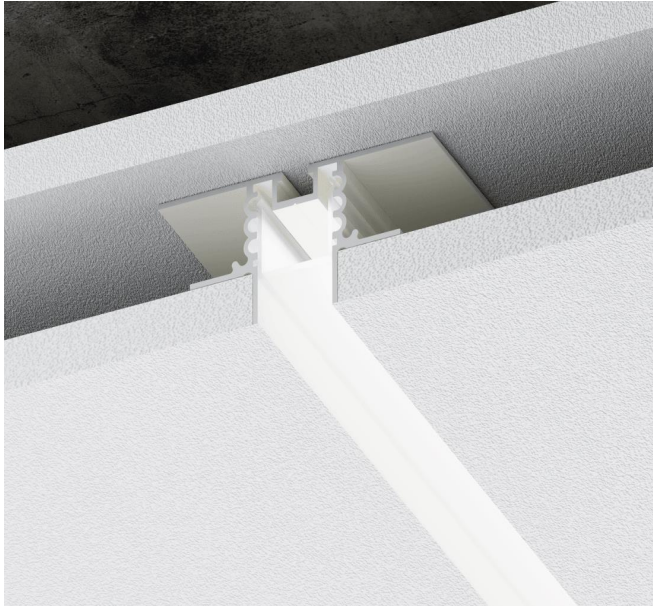
Copertura microprismata
Microprismatic diffuser



Copertura Magic Black
Magic Black diffuser

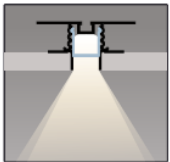


Copertura Black
Painted Black diffuser

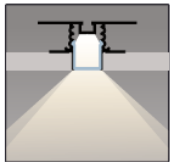


Taglio di luce

Tipi di installazione / Placements



Incasso / Retrocesso
Plaster-in / Recessed



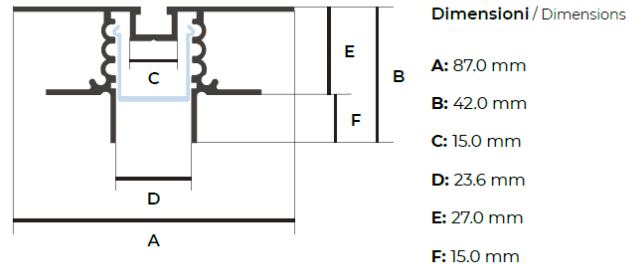
Incasso / A filo
Plaster-in / Flat

Specifiche tecniche / Specs

Materiale / Material	Alluminio 6060 / Aluminum 6060
Copertura / Diffuser	Policarbonato Resistente UV / PC UV Resistant
Grado IP / IP Grade	IP52
Apertura luce / Beam Angle	160°
Lunghezze disponibili / Available Lengths	1m, 2m, 2.5m, 3m, fino a 6m / Up to 6m
Dimensioni / Dimensions	87 x 42 mm

MADE IN ITALY

Sezione / Section



Finiture / Finishings

Finitura Finishing

- Anodizzato Argento / Silver Anodized
- Verniciato Bianco / White Painted
- Anodizzato Nero / Black Anodized

Accessori / Accessories



Testata forata argento
Open silver end cap



Testata forata bianca
Open white end cap



Testata forata nera
Open black end cap

Coperture / Diffusers

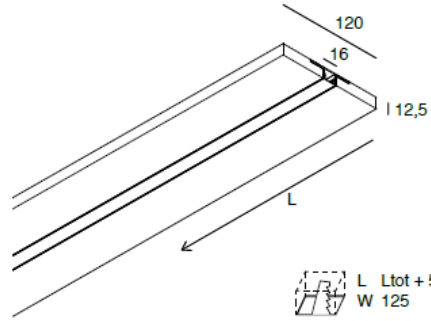


Copertura opale
Opal diffuser

PROFILI
LASTRE
CARTONGESSO

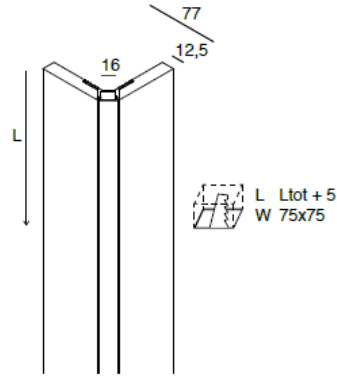
LINEA DI LUCE
16mm





PROFILO LINEARE
LINEAR PROFILE

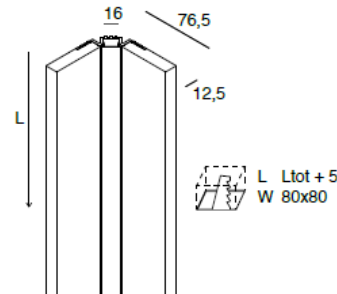
L (mm)	Version
2000	Standard
2000	HYDRO



L-16 CORNER
profilo lineare per spigolo esterno
non installabile direttamente
su muratura

L-16 CORNER
linear profile for external corner
not for direct installation
on hard surfaces

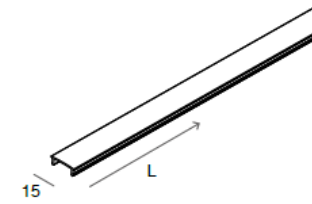
L (mm)	Version
2000	Standard
2000	HYDRO



L-16 EDGE
profilo lineare per spigolo interno

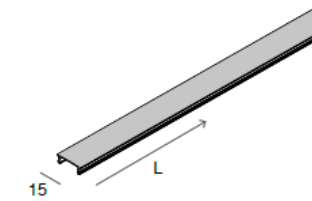
L-16 EDGE
linear profile for internal corner

L (mm)	Version
2000	Standard
2000	HYDRO



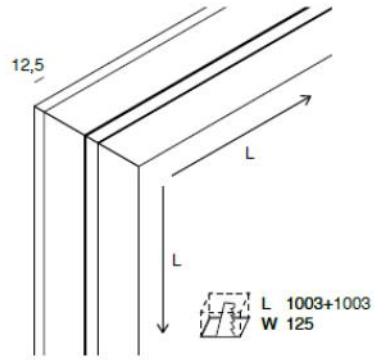
SCHERMO OPALE 6 m
opzionale
Consigliato per installazioni in fila continua

OPAL SCREEN 6 m
optional
Recommended for continuous line installations



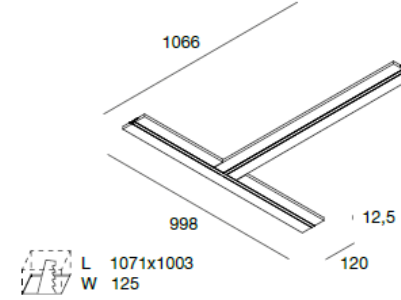
SCHERMO DIFFUSORE NERO
In policarbonato, ad uso decorativo.
Per il flusso luminoso reale fare riferimento
alle fotometrie ufficiali.

BLACK DIFFUSER
Polycarbonate diffuser for decorative use.
For the real luminous flux refer to the official
photometries.



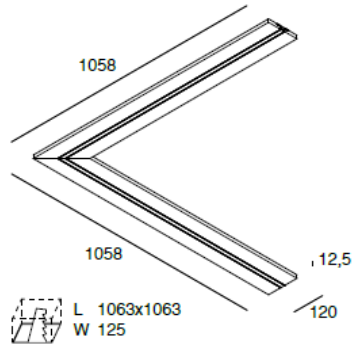
**PROFILO ANGOLARE 90°
PARETE-SOFFITTO**
**WALL-CEILING
90° CORNER PROFILE**

L (mm)	Version
998+998	Standard
998+998	HYDRO



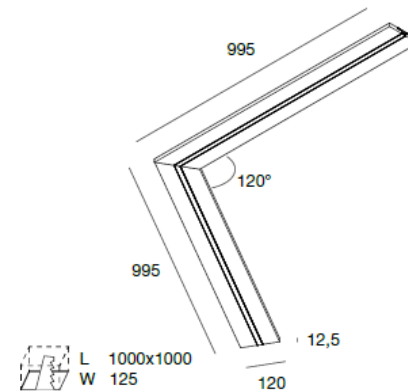
PROFILO A "T"
"T" PROFILE

L (mm)	Version
1066x998	Standard
1066x998	HYDRO



**PROFILO ANGOLARE 90°
90° CORNER PROFILE**

L (mm)	Version
1058x1058	Standard
1058x1058	HYDRO



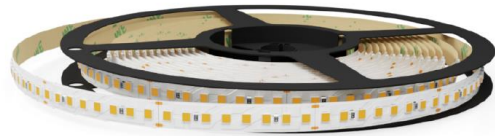
**PROFILO ANGOLARE 120°
120° CORNER PROFILE**

L (mm)	Version
995x995	Standard
995x995	HYDRO

Striscia LED
168 LED/m - 18W al metro
COD: **122B**



Striscia LED Professionale
160 LED/m - 10W al metro
COD: **C80**



Striscia LED
Linea Continua
COD: **124A**

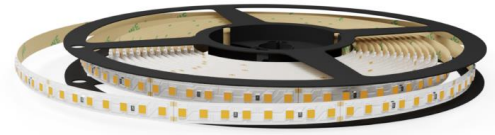


STRIP LED

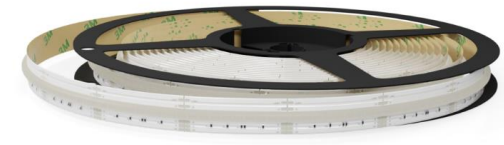
Striscia LED
196 LED/m - 15W al metro
COD: **1250**



Striscia LED Professionale
HF - 144 LED/m - 15W al metro
COD: **C8A**



Striscia LED
Linea Continua - RGBW
COD: **124B**



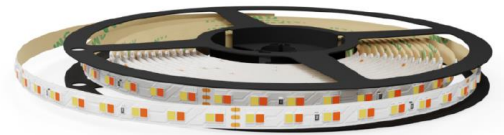
Striscia LED Siena
144 LED/m - 16W al metro
COD: **1040**



Striscia LED Alba
240 LED/m - 32W al metro
COD: **10EA**



Striscia LED Professionale
Bianco Dinamico
COD: **CDO**



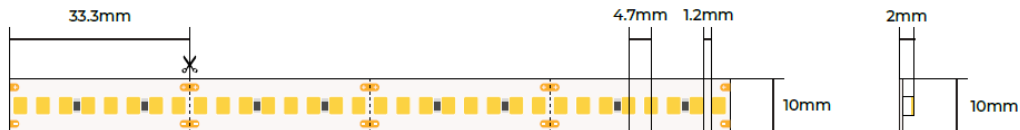
Striscia LED

168 LED/m - 18W al metro

COD: 122B



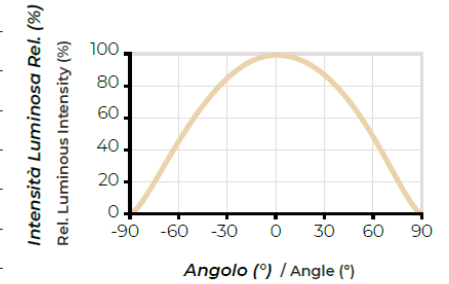
Modulo taglio / PCB Cut



Specifiche tecniche / Specs

Tensione / Voltage	24V DC
Potenza al metro / Power per meter	32 W/m
Chip LED / Chip LED	SAMSUNG LM281B+ High Flux
Numero Chip / Chip Number	240 LED/m
Lifetime / Lifetime	L80/B10
Grado IP / IP Grade	IP20
CRI / CRI	95 Ra ±3%
Lunghezza / Length	5 m
Larghezza / Width	10 mm
Taglio / PCB Cut	33.3 mm
Adesivo / Adhesive	3M 200MP

Irraggiamento / Radiation Diagram

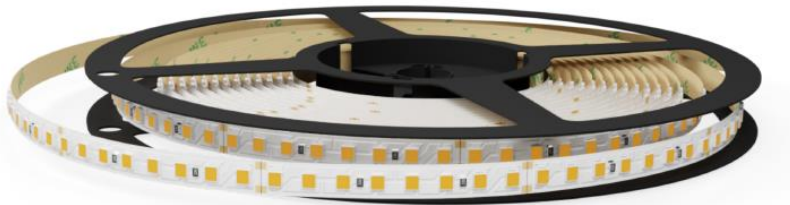


Temperatura colore / Color Temperature

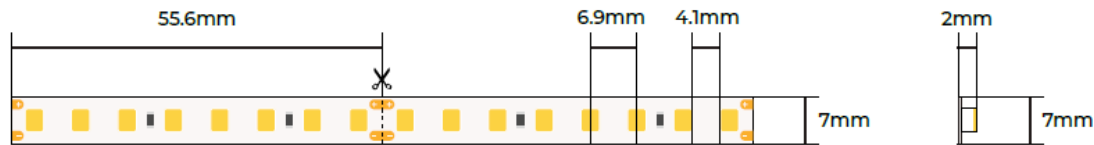
COD	Temperatura Colore	Efficienza	LUMEN / m
COD	Color Temperature	Efficacy	LUMEN / m
10EA.2700	2700K	160 lm/W	5120 lm/m
10EA.3000	3000K	164 lm/W	5248 lm/m
10EA.3500	3500K	167 lm/W	5344 lm/m
10EA.4000	4000K	170 lm/W	5440 lm/m
10EA.5000	5000K	170 lm/W	5440 lm/m

Striscia LED Professionale HF - 144 LED/m - 15W al metro

COD: C8A



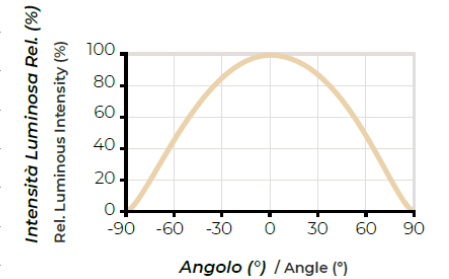
Modulo taglio / PCB Cut



Specifiche tecniche / Specs

Tensione / Voltage	24V DC
Potenza al metro / Power per meter	15 W/m
Chip LED / Chip LED	SMD 2835
Numero Chip / Chip Number	144 LED/m
Lifetime / Lifetime	L80/B10
Grado IP / IP Grade	IP20
CRI / CRI	~85 Ra
Lunghezza / Length	5 m
Larghezza / Width	7 mm
Taglio / PCB Cut	55.6 mm
Adesivo / Adhesive	3M 200MP

Irraggiamento / Radiation Diagram



Temperatura colore / Color Temperature

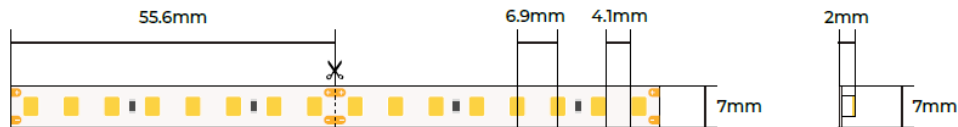
COD COD	Temperatura Colore Color Temperature	Efficienza Efficacy	LUMEN / m LUMEN / m
C8A.2700	2700K	155 lm/W	2325 lm/m
C8A.3000	3000K	161 lm/W	2415 lm/m
C8A.4000	4000K	164 lm/W	2460 lm/m
C8A.5000	5000K	164 lm/W	2460 lm/m

Striscia LED Siena 144 LED/m - 16W al metro

COD: 1040



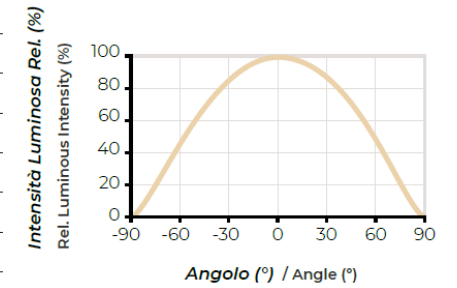
Modulo taglio / PCB Cut



Specifiche tecniche / Specs

Tensione / Voltage	24V DC
Potenza al metro / Power per meter	16 W/m
Chip LED / Chip LED	SAMSUNG LM281B+ High Flux
Numero Chip / Chip Number	144 LED/m
Lifetime / Lifetime	L80/B10
Grado IP / IP Grade	IP20
CRI / CRI	95 Ra \pm 3%
Lunghezza / Length	5 m
Larghezza / Width	7 mm
Taglio / PCB cut	55.6 mm
Adesivo / Adhesive	3M 200MP

Irraggiamento / Radiation Diagram



Temperatura colore / Color Temperature

COD COD	Temperatura Colore Color Temperature	Efficienza Efficacy	LUMEN / m LUMEN / m
1040.2700	2700K	160 lm/W	2560 lm/m
1040.3000	3000K	164 lm/W	2624 lm/m
1040.3500	3500K	167 lm/W	2672 lm/m
1040.4000	4000K	170 lm/W	2720 lm/m
1040.5000	5000K	170 lm/W	2720 lm/m

Striscia LED
196 LED/m - 15W al metro

COD: 1250



Modulo taglio / PCB Cut



Specifiche tecniche / Specs

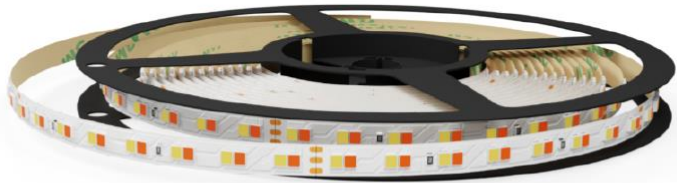
Tensione / Voltage	24V DC
Potenza al metro / Power per meter	15 W/m
Chip LED / Chip LED	SMD 2835
Numero Chip / Chip Number	196 LED/m
Lifetime / Lifetime	L70/B50
Grado IP / IP Grade	IP20
CRI / CRI	90 Ra
Lunghezza / Length	5 m
Larghezza / Width	5 mm
Taglio / PCB Cut	35.7 mm
Adesivo / Adhesive	3M

Temperatura colore / Color Temperature

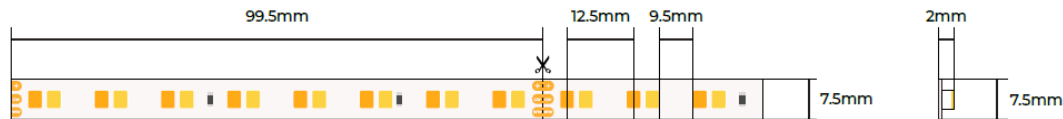
COD	Temperatura Colore	Efficienza	LUMEN / m
COD	Color Temperature	Efficacy	LUMEN / m
1250.2700	2700K	105 lm/W	1575 lm/m
1250.3000	3000K	107 lm/W	1605 lm/m
1250.4000	4000K	110 lm/W	1650 lm/m
1250.5000	5000K	112 lm/W	1680 lm/m

Striscia LED Professionale Bianco Dinamico

COD: CDO



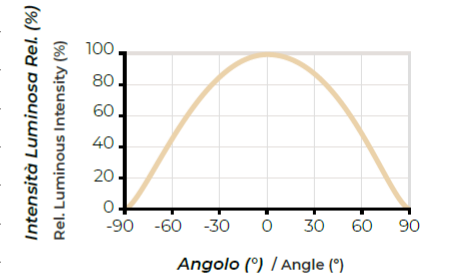
Modulo taglio / PCB Cut



Specifiche tecniche / Specs

Tensione / Voltage	24V DC
Potenza al metro / Power per meter	15.6 W/m
Chip LED / Chip LED	OSRAM DURIS 2835
Numero Chip / Chip Number	160 LED/m
Lifetime / Lifetime	L80/B10
Grado IP / IP Grade	IP20
CRI / CRI	~85 Ra
Lunghezza / Length	5 m
Larghezza / Width	7.5 mm
Taglio / PCB Cut	99.5 mm
Adesivo / Adhesive	3M 200MP

Irraggiamento / Radiation Diagram

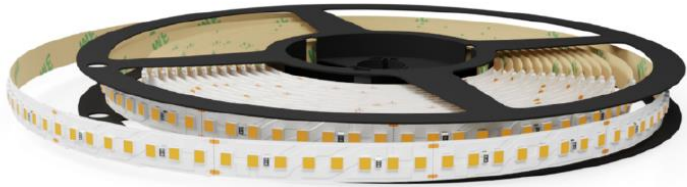


Temperatura colore / Color Temperature

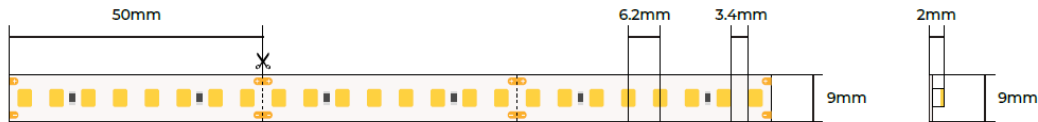
COD	Temperatura Colore	Efficienza	LUMEN / m
COD	Color Temperature	Efficacy	LUMEN / m
CDO.2700-5000	2700K/5000K	155 lm/W	2418 lm/m
CDO.3000-4000	3000K/4000K	156 lm/W	2434 lm/m
CDO.2200-6500	2200K/6500K	144 lm/W	2262 lm/m

Striscia LED Professionale 160 LED/m - 10W al metro

COD: C80



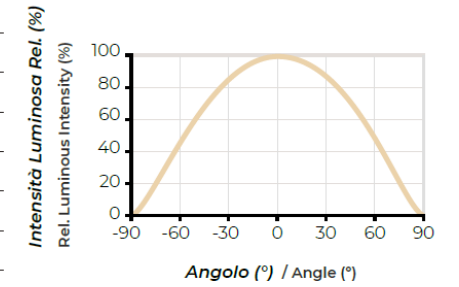
Modulo taglio / PCB Cut



Specifiche tecniche / Specs

Tensione / Voltage	24V DC
Potenza al metro / Power per meter	10 W/m
Chip LED / Chip LED	SAMSUNG LM281B+
Numero Chip / Chip Number	160 LED/m
Lifetime / Lifetime	L80/B10
Grado IP / IP Grade	IP20
CRI / CRI	>90 Ra
Lunghezza / Length	5 m
Larghezza / Width	9 mm
Taglio / PCB Cut	50 mm
Adesivo / Adhesive	3M 200MP

Irraggiamento / Radiation Diagram



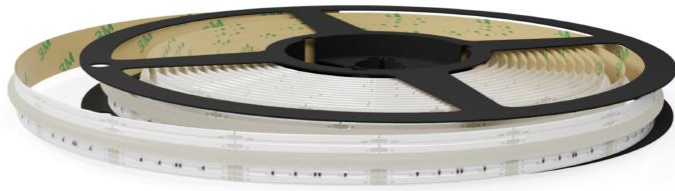
Temperatura colore / Color Temperature

COD COD	Temperatura Colore Color Temperature	Efficienza Efficacy	LUMEN / m LUMEN / m
C80.2200	2200K	124 lm/W	1240 lm/m
C80.2700	2700K	132 lm/W	1320 lm/m
C80.3000	3000K	140 lm/W	1400 lm/m
C80.3500	3500K	142 lm/W	1420 lm/m
C80.4000	4000K	144 lm/W	1440 lm/m
C80.5000	5000K	145 lm/W	1450 lm/m
C80.6500	6500K	145 lm/W	1450 lm/m

Striscia LED

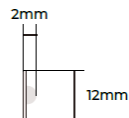
Linea Continua - RGBW

COD: 124B



RGBW

Modulo taglio / PCB Cut



Specifiche tecniche / Specs

Tensione / Voltage	24V DC
Potenza al metro / Power per meter	20 W/m
Chip LED / Chip LED	CSP RGBW
Numero Chip / Chip Number	840 LED/m
Lifetime / Lifetime	L80/B10
Grado IP / IP Grade	IP20
CRI / CRI	>80 Ra
Lunghezza / Length	5 m
Larghezza / Width	12 mm
Taglio / PCB Cut	33.3 mm
Adesivo / Adhesive	3M 200MP

Temperatura colore / Color Temperature

COD COD	Temperatura Colore Color Temperature	Efficienza Efficacy	LUMEN / m LUMEN / m
124B.2700	RGB + 2700K	95 lm/W	475 lm/m
124B.3000	RGB + 3000K	102 lm/W	510 lm/m
124B.4000	RGB + 4000K	108 lm/W	540 lm/m

Striscia LED Linea Continua

COD: 124A



Modulo taglio / PCB Cut



Specifiche tecniche / Specs

Tensione / Voltage	24V DC
Potenza al metro / Power per meter	15 W/m
Chip LED / Chip LED	COB
Numero Chip / Chip Number	512 LED/m
Lifetime / Lifetime	L80/B10
Grado IP / IP Grade	IP20
CRI / CRI	92 Ra
Lunghezza / Length	5 m
Larghezza / Width	10 mm
Taglio / PCB Cut	62.5 mm
Adesivo / Adhesive	3M 200MP

Temperatura colore / Color Temperature

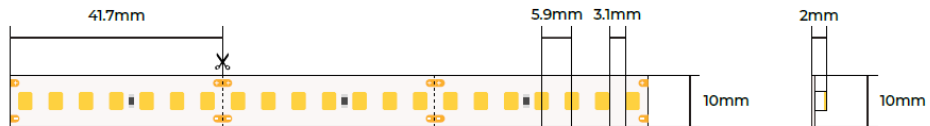
COD COD	Temperatura Colore Color Temperature	Efficienza Efficacy	LUMEN / m LUMEN / m
124A.2700	2700K	95 lm/W	1425 lm/m
124A.3000	3000K	102 lm/W	1530 lm/m
124A.4000	4000K	108 lm/W	1620 lm/m
124A.6000	6000K	108 lm/W	1620 lm/m

Striscia LED 168 LED/m - 18W al metro

COD: 122B



Modulo taglio / PCB Cut



Specifiche tecniche / Specs

Tensione / Voltage	24V DC
Potenza al metro / Power per meter	18 W/m
Chip LED / Chip LED	SMD 2835
Numero Chip / Chip Number	168 LED/m
Lifetime / Lifetime	L70/B50
Grado IP / IP Grade	IP20
CRI / CRI	90 Ra
Lunghezza / Length	5 m
Larghezza / Width	10 mm
Taglio / PCB Cut	41.7 mm
Adesivo / Adhesive	3M

Temperatura colore / Color Temperature

COD	Temperatura Colore	Efficienza	LUMEN / m
COD	Color Temperature	Efficacy	LUMEN / m
122B.2700	2700K	105 lm/W	1890 lm/m
122B.3000	3000K	105 lm/W	1890 lm/m
122B.4000	4000K	107 lm/W	1926 lm/m
122B.5000	5000K	110 lm/W	1980 lm/m

ALIMENTATORI



Mean Well
Serie HLG



Mean Well
Serie ELG - XLG



Mean Well
Serie PWM



Mean Well
Serie LPV



AcTEC SUPER SLIM



AcTEC LINE TYPE



Mean Well Serie HLG

Specifiche tecniche / Specs

Prodotto Product	COD COD	Descrizione Description	Dimensioni (mm) Dimensions (mm)	Volt OUT Volt OUT	Potenza Power	Grado IP IP Rating
HLG-40H-24A	1FA5	Tensione Regolabile	171 x 61.5 x 36.8	24V DC	40 W	IP65
HLG-60H-24A	1FA8	Tensione Regolabile	171 x 61.5 x 36.8	24V DC	60 W	IP65
HLG-80H-24A	1FAB	Tensione Regolabile	195.6 x 61.5 x 38.8	24V DC	80 W	IP65
HLG-80H-24B	1FAC	Dimm 1/10V, Pot. 100K ohm	195.6 x 61.5 x 38.8	24V DC	80 W	IP67
HLG-100H-24A	1FAF	Tensione Regolabile	220 x 68 x 38.8	24V DC	96 W	IP65
HLG-120H-24B	1FB3	Dimm 1/10V, Pot. 100K ohm	220 x 68 x 38.8	24V DC	120 W	IP67
HLG-150H-24A	1FB5	Tensione Regolabile	228 x 68 x 38.8	24V DC	150 W	IP65
HLG-150H-24B	1FB6	Dimm 1/10V, Pot. 100K ohm	228 x 68 x 38.8	24V DC	150 W	IP67
HLG-185H-24A	1FB8	Tensione Regolabile	228 x 68 x 38.8	24V DC	185 W	IP65
HLG-185H-24B	1FB9	Dimm 1/10V, Pot. 100K ohm	228 x 68 x 38.8	24V DC	185 W	IP67
HLG-240H-24A	1FBB	Tensione Regolabile	244.2 x 68 x 38.8	24V DC	240 W	IP65
HLG-240H-24B	1FBC	Dimm 1/10V, Pot. 100K ohm	244.2 x 68 x 38.8	24V DC	240 W	IP67
HLG-320H-24A	1FBE	Tensione Regolabile	252 x 90 x 43.8	24V DC	320 W	IP65
HLG-320H-24B	1FBF	Dimm 1/10V, Pot. 100K ohm	252 x 90 x 43.8	24V DC	320 W	IP67
HLG-480H-24A	1FC1	Tensione Regolabile	262 x 125 x 43.8	24V DC	480 W	IP65
HLG-480H-24B	1FC2	Dimm 1/10V, Pot. 100K ohm	262 x 125 x 43.8	24V DC	480 W	IP67
HLG-600H-24A	1FC4	Tensione Regolabile	280 x 144 x 48.5	24V DC	600 W	IP65

Specifiche tecniche / Specs

Prodotto Product	COD COD	Descrizione Description	Dimensioni (mm) Dimensions (mm)	Volt OUT Volt OUT	Potenza Power	Grado IP IP Rating
ELG-75-24	2210	Versione Blank	180 x 63 x 35.5	24V DC	75 W	IP67
ELG-75-24DA	221F	Dimmerazione DALI	180 x 63 x 35.5	24V DC	75 W	IP67
ELG-100-24	2213	Versione Blank	199 x 63 x 35.5	24V DC	96 W	IP67
ELG-100-24DA	2220	Dimmerazione DALI	199 x 63 x 35.5	24V DC	96 W	IP67
ELG-150-24	2216	Versione Blank	219 x 63 x 35.5	24V DC	150 W	IP67
ELG-150-24DA	2221	Dimmerazione DALI	219 x 63 x 35.5	24V DC	150 W	IP67
ELG-200-24	2219	Versione Blank	244 x 71 x 37.5	24V DC	200 W	IP67
ELG-200-24DA	2222	Dimmerazione DALI	244 x 71 x 37.5	24V DC	200 W	IP67
ELG-240-24	221C	Versione Blank	244 x 71 x 37.5	24V DC	240 W	IP67
ELG-240-24DA	2223	Dimmerazione DALI	244 x 71 x 37.5	24V DC	240 W	IP67
ELG-300-24A	224D	Tensione regolabile	246 x 77 x 39.5	24V DC	300 W	IP67

Specifiche tecniche / Specs

Prodotto Product	COD COD	Descrizione Description	Dimensioni (mm) Dimensions (mm)	Volt OUT Volt OUT	Potenza Power	Grado IP IP Rating
XLG-75-24-A	283C	Corrente in uscita regolabile	140 x 63 x 32	24V DC	75 W	IP67
XLG-100-24-A	283D	Corrente in uscita regolabile	140 x 63 x 32	24V DC	96 W	IP67
XLG-150-24-A	283E	Corrente in uscita regolabile	180 x 63 x 35.5	24V DC	150 W	IP67
XLG-200-24-A	283F	Corrente in uscita regolabile	199 x 63 x 35.5	24V DC	200 W	IP67
XLG-320-V-A	2840	Corrente in uscita regolabile	246 x 77 x 39.5	24V DC	312 W	IP67



Mean Well
Serie ELG - XLG



Mean Well Serie LPV

Specifiche tecniche / Specs

Prodotto Product	COD COD	Descrizione Description	Dimensioni (mm) Dimensions (mm)	Volt OUT Volt OUT	Potenza Power	Grado IP IP Rating
LPV-20-24	20E4	Case Plastico	118 x 35 x 26	24V DC	20 W	IP67
LPV-35-24	20E5	Case Plastico	148 x 40 x 30	24V DC	35 W	IP67
LPV-60-24	20E6	Case Plastico	162.5 x 42.5x 32	24V DC	60 W	IP67
LPV-100-24	20E7	Case Plastico	190 x 52 x 37	24V DC	100 W	IP67
LPV-150-24	20E8	Case Plastico	191 x 63 x 37,5	24V DC	150 W	IP67



AcTEC LINE TYPE

Specifiche tecniche / Specs

Prodotto Product	COD COD	Descrizione Description	Dimensioni (mm) Dimensions (mm)	Volt OUT Volt OUT	Potenza Power	Grado IP IP Rating
LT-30-24	2D1E	Design lineare	251 x 30 x 16	24V DC	30 W	IP54
LT-60-24	2D1F	Design lineare	305 x 30 x 17	24V DC	60 W	IP54
LT-75-24	2D20	Design lineare	305 x 30 x 17	24V DC	75 W	IP54
LT-100-24	2D21	Design lineare	312 x 30 x 18.2	24V DC	100 W	IP54
LT-150-24	2D22	Design lineare	336 x 30 x 17	24V DC	150 W	IP54
LT-200-24	2D23	Design lineare	335 x 30 x 21.5	24V DC	200 W	IP54
LT-240-24	2D24	Design lineare	360 x 32 x 22.5	24V DC	240 W	IP54

Serie DALI

LT-75-24D	2D28	Design lineare DALI 2 e Push	345 x 35 x 18.7	24V DC	75 W	IP54
LT-100-24D	2D29	Design lineare DALI 2 e Push	345 x 35 x 18.7	24V DC	100 W	IP54
LT-150-24D	2D2A	Design lineare DALI 2 e Push	360 x 35 x 22	24V DC	150 W	IP54
LT-200-24D	2D2B	Design lineare DALI 2 e Push	360 x 35 x 22	24V DC	200 W	IP54
LT-240-24D	2D2C	Design lineare DALI 2 e Push	360 x 35 x 22	24V DC	240 W	IP54



AcTEC SUPER SLIM

Specifiche tecniche / Specs

Prodotto Product	COD COD	Descrizione Description	Dimensioni (mm) Dimensions (mm)	Volt OUT Volt OUT	Potenza Power	Grado IP IP Rating
MINI24V4W	2CEC	Formato Mini	53 x 27 x 21	24V DC	4 W	IP65
MINI24V6W	2CED	Formato Mini	50 x 38.5 x 18.5	24V DC	6 W	IP20
MINI24V12W	2CEE	Formato Mini	50 x 48 x 24	24V DC	12 W	IP65
UT24V6W	2CF6	Formato Super Slim	98 x 46 x 11	24V DC	6 W	IP54
UT24V12W	2CF7	Formato Super Slim	128 x 50 x 13	24V DC	12 W	IP54
UT24V20W	2CF8	Formato Super Slim	128 x 50 x 13	24V DC	20 W	IP54
UT24V30W	2CF9	Formato Super Slim	155 x 53 x 16	24V DC	30 W	IP54
UT24V50W	2CFA	Formato Super Slim	185 x 62 x 22	24V DC	50 W	IP54
Q3-24V-100W	2D32	Formato Super Slim	184 x 61 x 32	24V DC	100 W	IP54
Q8H-24V-75W	2D3C	Formato Super Slim	184 x 61 x 32	24V DC	75 W	IP54
Q8H-24V-150W	2D3D	Formato Super Slim	210 x 67 x 34	24V DC	150 W	IP54

NEWLAB
Centraline made in Italy



Centraline e telecomandi - Dimmer



Centraline smart e domotica



SISTEMI DI CONTROLLO

Centraline e telecomandi - Bianco Dinamico



Amplificatori di segnale PWM



Centraline e telecomandi - RGB-RGBW



NEWLAB
Centraline made in Italy



Specifiche tecniche / Specs

Codice produttore Manufacturer code	COD COD	Descrizione Description
PUSH-CV	2754B	Dimmer monocanale CV da 12V a 48V, pulsante contatto pulito, 0-10V e potenziometro, 10A
DALI-CV	27531	Dimmer monocanale CV da 12V a 48V DALI, pulsante isolato, 0-10V e potenziometro, 12A, Ingresso 8-53V
DALI-230V	27542	Dimmer taglio di fase con ingresso DALI
WIFI-CV	27545	Dimmer monocanale da 12V a 48V, 12A, per gestione smart di strisce LED bianche
WIFI-5CV-RGBWW	27549	Controller da 12V a 48V, 6A per canale, gestione smart di strisce LED CCT, RGBW e RGB+CCT
WIFI-230V	27547	Dimmer Monocanale con uscita a dimmerata taglio di fase per strisce LED e faretto
WIFI-IRELE	2754A	Relè Smart WiFi fino a 2A 220V
PUSH-DALI	27548	Centralina bridge Wi-Fi Master DALI
BOOSTER-CV	2753B	Amplificatore di segnale PWM 12A da 12V a 48V

Centraline e telecomandi - Dimmer



Specifiche tecniche / Specs

Codice produttore Manufacturer code	COD COD	Descrizione Description
Telecomandi		
T1-DIM	8B15	Telecomando Dimmer PRO - 1 zona
T4-DIM	8B16	Telecomando Dimmer PRO - 4 zone
TS4-DIM	8B1C	Telecomando Dimmer - 4 zone
TS-DIM	8B10	Telecomando Dimmer Slim Touch Slide - 1 zona
TP4-DIM	8B1E	Pannello a parete per scatola 503 - 220V - 4 zone
TS4-CH	8B1D	Telecomando Dimmer - 4 zone per centralina 4 canali
Centraline		
D1	8AAC	Centralina 1 Canale da 8A, 5-36V - Compatibile con telecomando + Push Button
D1-PRO	8AAE	Centralina 1 Canale da 15A, 12-24V - Compatibile con telecomando + Push Button
D1-P	8B3I	Dimmer a 1 canale da 20A da 12-24V con potenziometro a bordo ed RF

Centraline smart e domotica



Specifiche tecniche / Specs

Codice produttore Manufacturer code	COD COD	Descrizione Description
App Tuya		
WD1	8AB7	Centralina 2 canali 5A per strisce LED bianche e CCT con WiFi e funzioni Smart
WDS	8AB6	Centralina 5 canali 3A per RGB, RGBW e RGB+CCT con WiFi e funzioni Smart
App Oikos		
MADE IN ITALY		
WIFI-CV	27545	Centralina 5 canali 3A per RGB, RGBW e RGB+CCT con WiFi e funzioni Smart
WIFI-5CV-RGBWW	27549	Controller da 12V a 48V, 6A per canale, gestione smart di strisce LED CCT, RGBW e RGB+CCT
WIFI-230V	27547	Dimmer Monocanale con uscita dimmerata taglio di fase per strisce LED e faretto
WIFI-IRELE	2754A	Relè Smart WiFi fino a 2A 220V
PUSH-DALI	27548	Centralina bridge da controllo Wi-Fi a Master DALI
App Casambi		
CASAMBI-PWM4	275B0	Centralina per sistema Casambi con uscita dimmer bianco, bianco dinamico ed RGBW
Domotica		
DALI-CV	27531	Dimmer monocanale CV da 12V a 48V DALI, pulsante isolato, 0-10V e pot. 100K - Made in Italy
DALI-PRO	8B2E	Centralina DALI DT6/DT8 con 4 canali da 5A per gestione di bianco, CCT e RGBW
DMX4-PRO	8B30	Centralina DMX da 4 canali 8A, da 12V a 48V con comodo schermo per selezionare l'indirizzo
Taglio di fase		
DI-T	8B26	Centralina 1 canale da 15A 12-48V con ingresso taglio di fase

Centraline e telecomandi - Bianco Dinamico



Specifiche tecniche / Specs

Codice produttore Manufacturer code	COD COD	Descrizione Description
Telecomandi		
T1-CCT	8B1B	Telecomando Bianco Dinamico PRO - 1 zona
T5-CCT	8B12	Telecomando Controller Slim Touch Slide - 1 zona Bianco Dinamico
TP4-CCT	8B1F	Pannello a parete per scatola 503 - 220V - 4 zone Bianco Dinamico
Centraline		
D2	8AB9	Centralina 2 Canali da 5A, 5-36V - Compatibile con telecomando + Push Button
D2-PRO	8ABA	Centralina 2 Canali da 8A, 5-36V - Compatibile con telecomando + Push Button

Centraline e telecomandi - RGB-RGBW



Specifiche tecniche / Specs

Codice produttore Manufacturer code	COD COD	Descrizione Description
Telecomandi		
T1-RGBW	8B1A	Telecomando RGBW/RGB PRO - 1 zona
T4-RGBW	8B1B	Telecomando RGBW/RGB PRO - 4 zone
T5-RGBW	8B14	Telecomando Controller Slim Touch Slide - 1 zona RGBW
TP4-RGBW	8B20	Pannello a parete per scatola 503 - 220V - 4 zone RGBW
Centraline		
D3	8AB0	Centralina 3 Canali da 4A, 12-24V - Compatibile con telecomando
D3-PRO	8AB1	Centralina 3 Canali da 6A, 12-36V - Compatibile con telecomando + 3 Push
D4	8AB3	Centralina 4 Canali da 3A, 12-24V - Compatibile con telecomando
D4-PRO	8AB2	Centralina 4 Canali da 5A, 12-36V - Compatibile con telecomando + 4 Push

Amplificatori di segnale PWM



Specifiche tecniche / Specs

Codice produttore Manufacturer code	COD COD	Descrizione Description
AMP-04-5A	88F5	Amplificatore di segnali PWM 4 canali da 5A, da 12V a 36V, adatto per CCT, RGB ed RGBW
AMP-04-8A	88F6	Amplificatore di segnali PWM 4 canali da 8A, da 12V a 36V, adatto per CCT, RGB ed RGBW
AMP-01-24A	88F7	Amplificatore di segnale PWM 1 canale da 24A, da 12V a 24V
A1-PRO	8AB8	Amplificatore di segnale PWM 1 canale da 15A, da 12V a 24V
A4	8ABB	Amplificatore di segnali PWM 4 canali da 5A, da 12V a 36V, adatto per CCT, RGB ed RGBW
BOOSTER-CV	2753B	Amplificatore di segnale PWM 12A da 12V a 48V - Made in Italy

ARCADIA
ARCADIA

ARCADIA

V.le Alcide De Gasperi, 5
24047Treviglio (BG)

info@arcadialuci.com

www.arcadialuci.com



Arcadia luci



arcadialuci